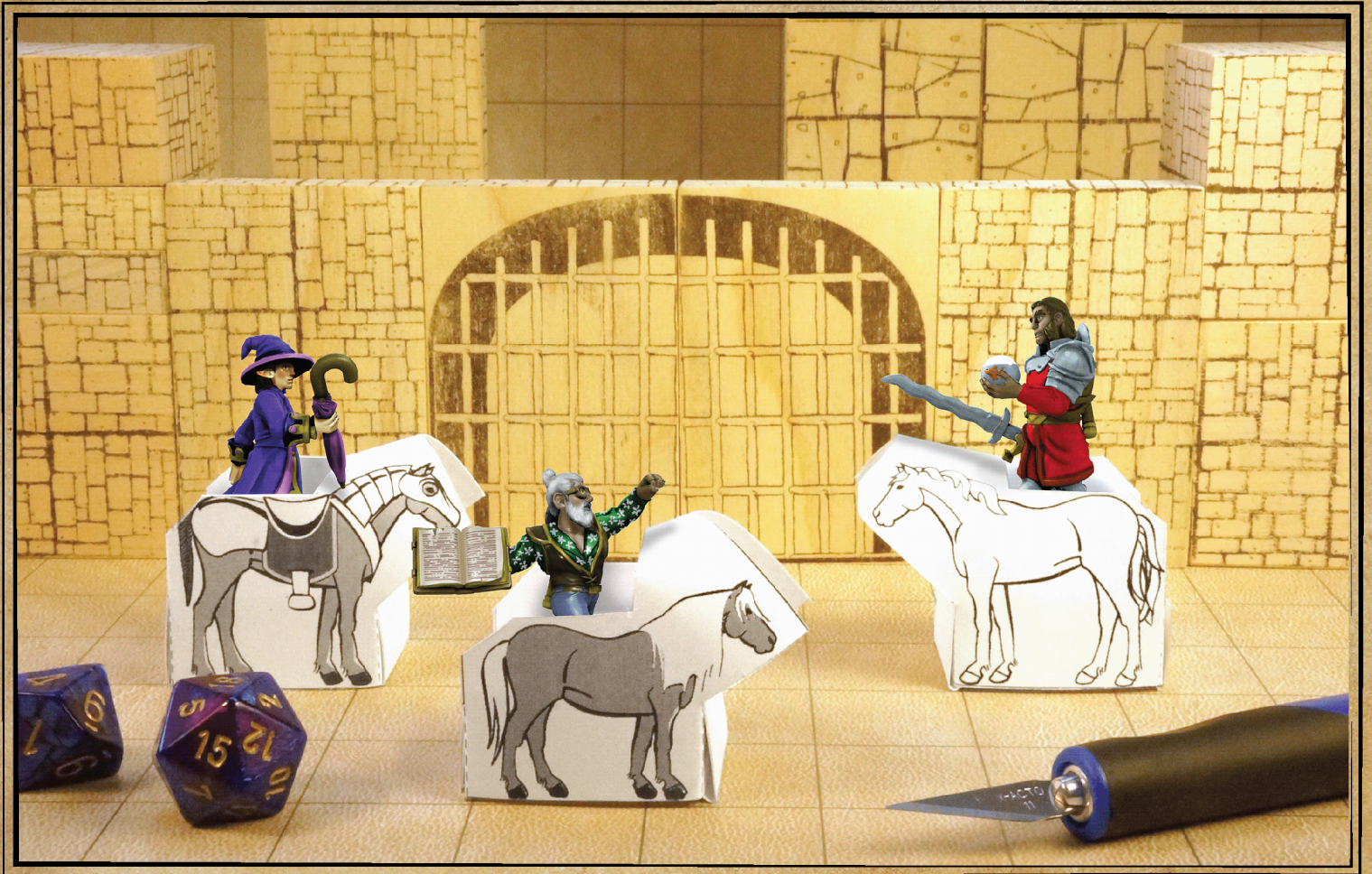


Papercraft Mini-Steeds

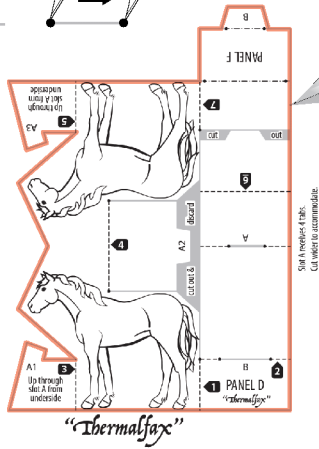
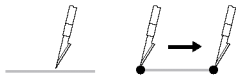


CryptoCartographer

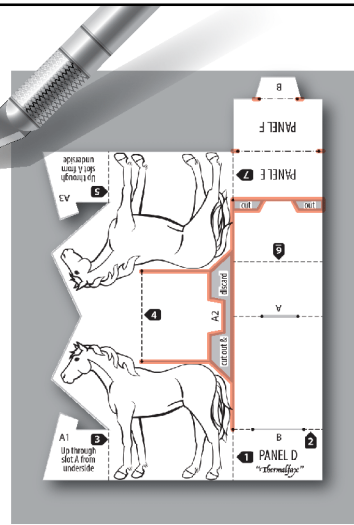


cryptocartographer.net

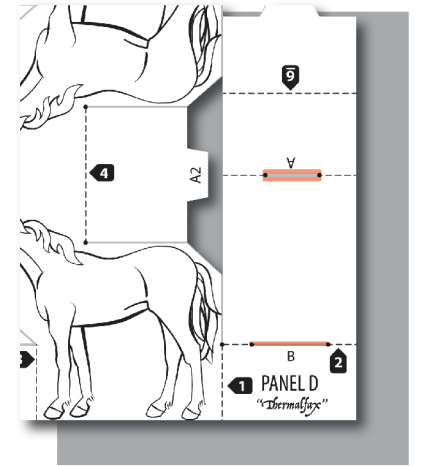
CUT



Using a paper knife, cut out the steed around the perimeter.



Cut the interior lines and remove the gray areas. Make notches for the valley folds at PANEL F.



Cut the two slots. Note that SLOT A receives four tabs, so widen the opening a bit, especially if you are printing on heavy paper.

ASSEMBLE



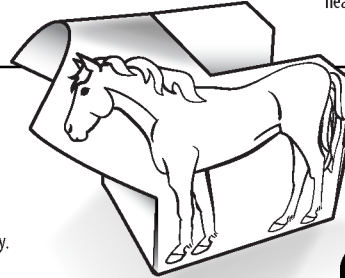
mountain fold



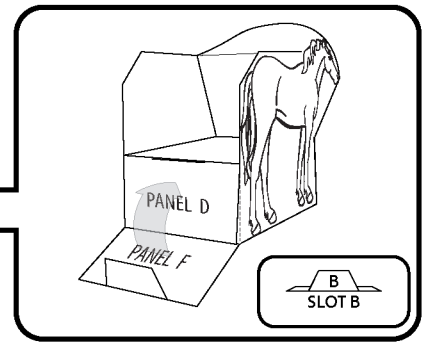
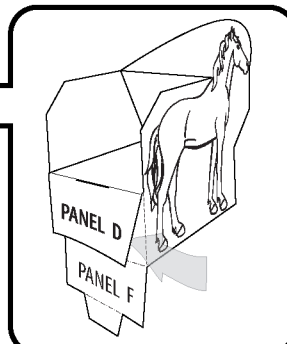
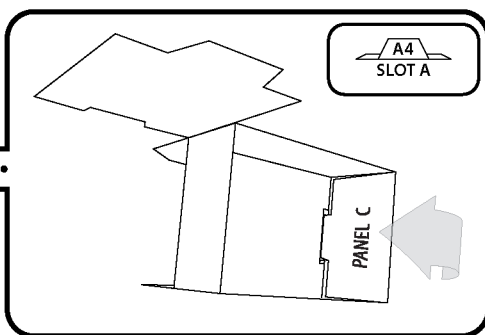
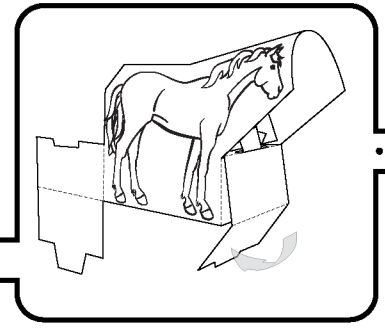
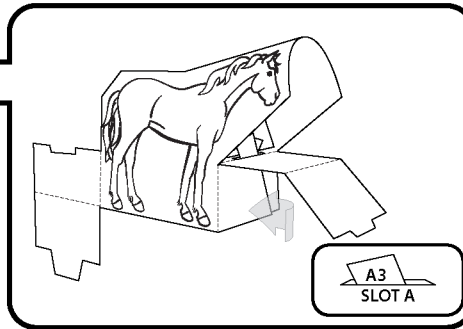
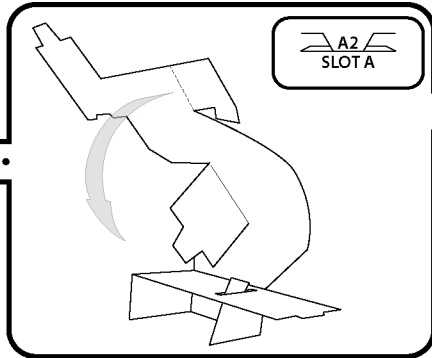
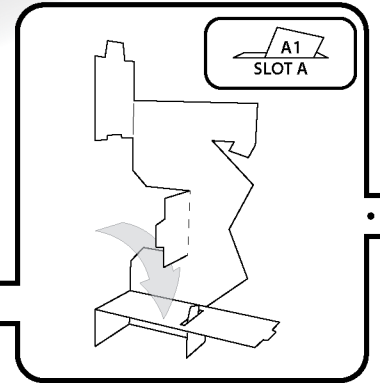
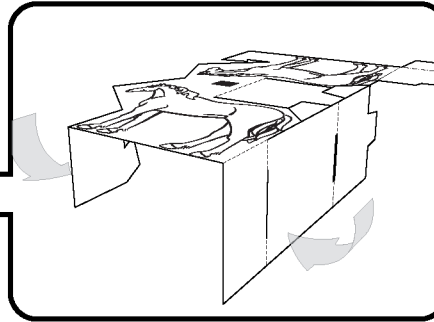
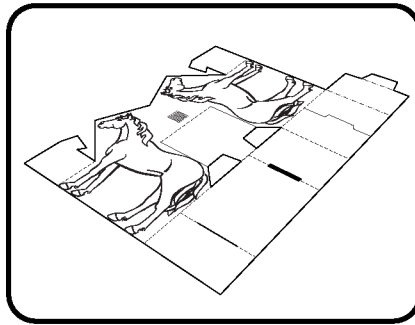
valley fold

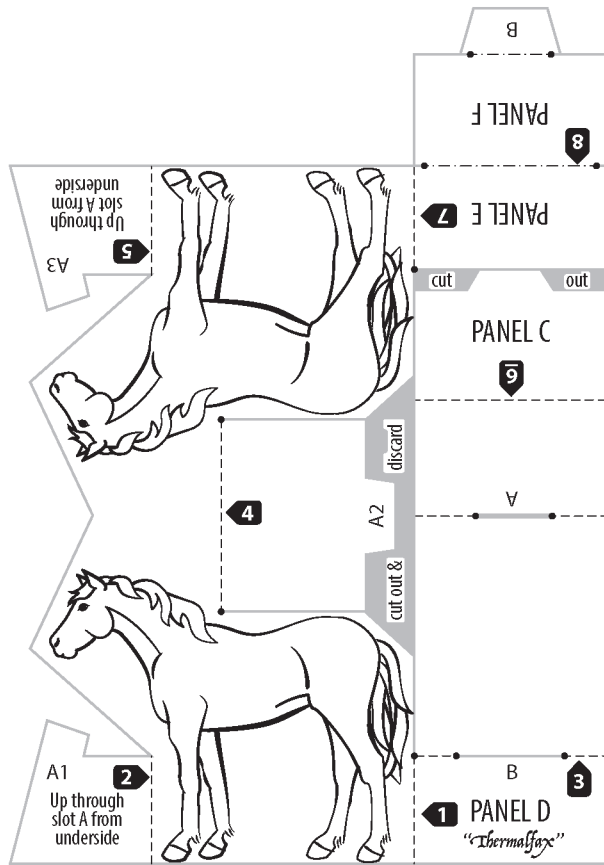


order of folds



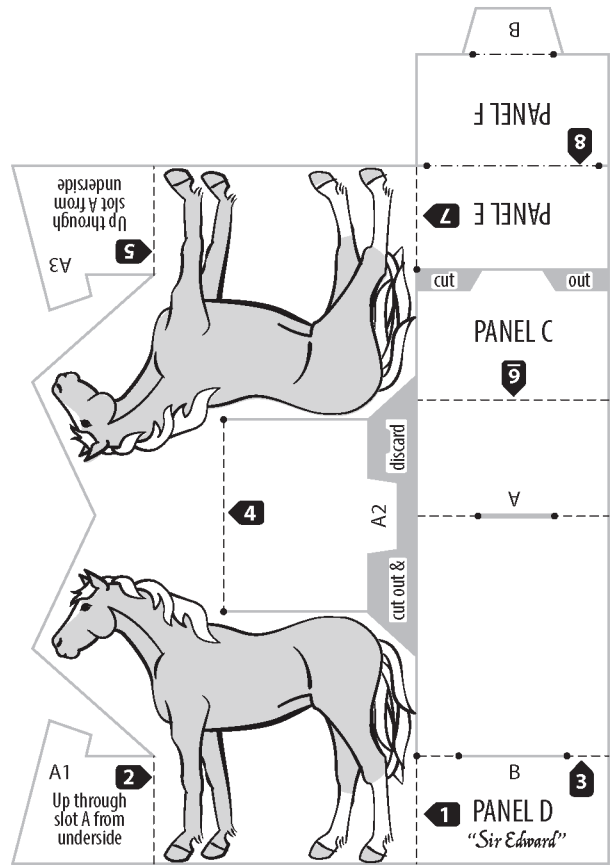
NOTE: Pre-fold or lightly score all mountain folds for crisp corners and easier assembly.





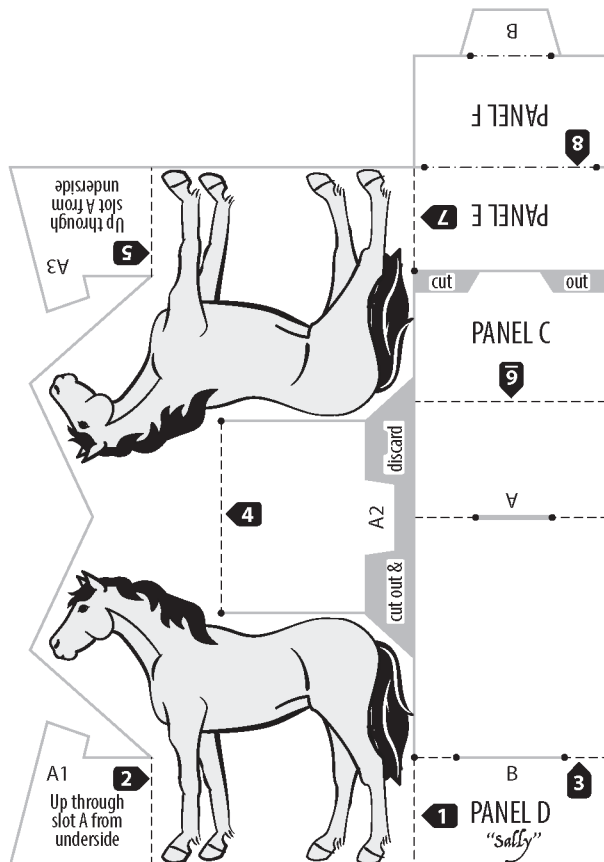
"Thermalfax"

Slot A receives 4 tabs.
Cut wider to accommodate.



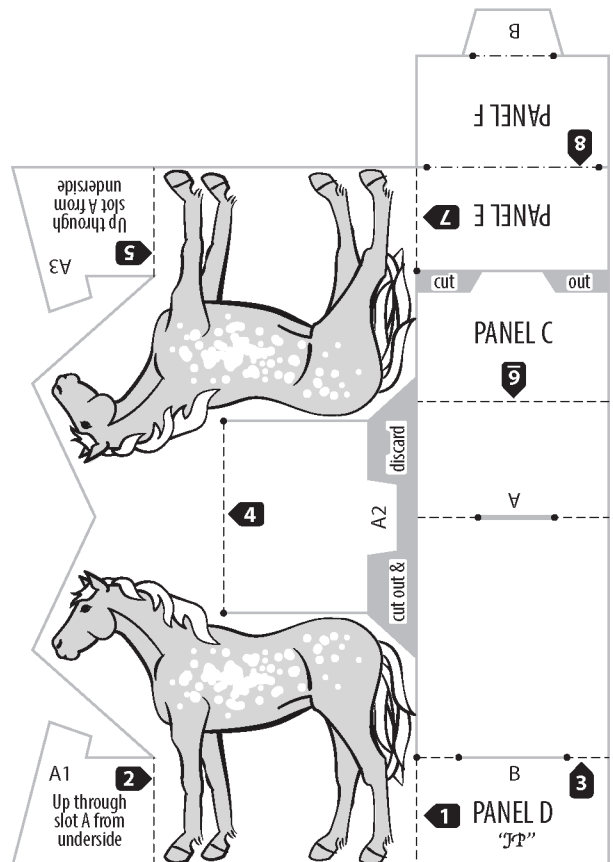
"Sir Edward"

Slot A receives 4 tabs.
Cut wider to accommodate.



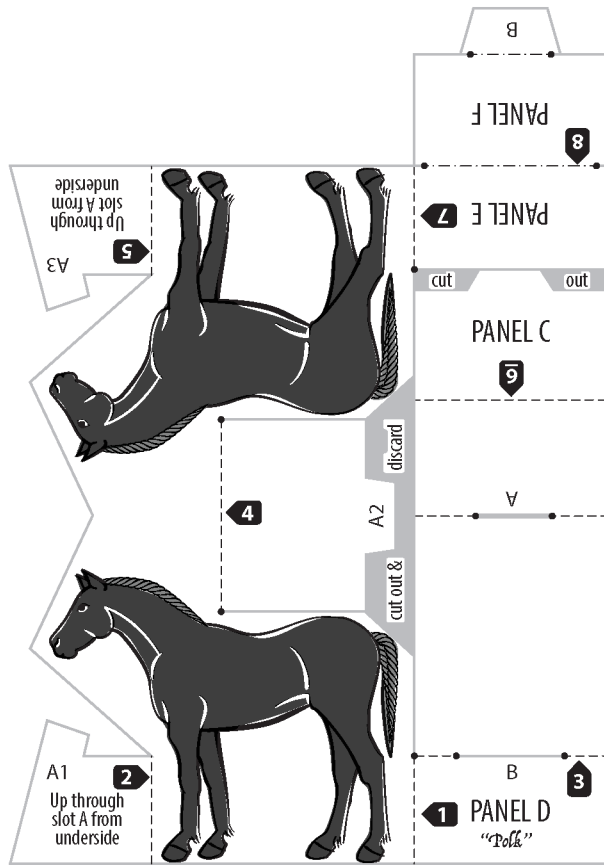
"Sally"

Slot A receives 4 tabs.
Cut wider to accommodate.

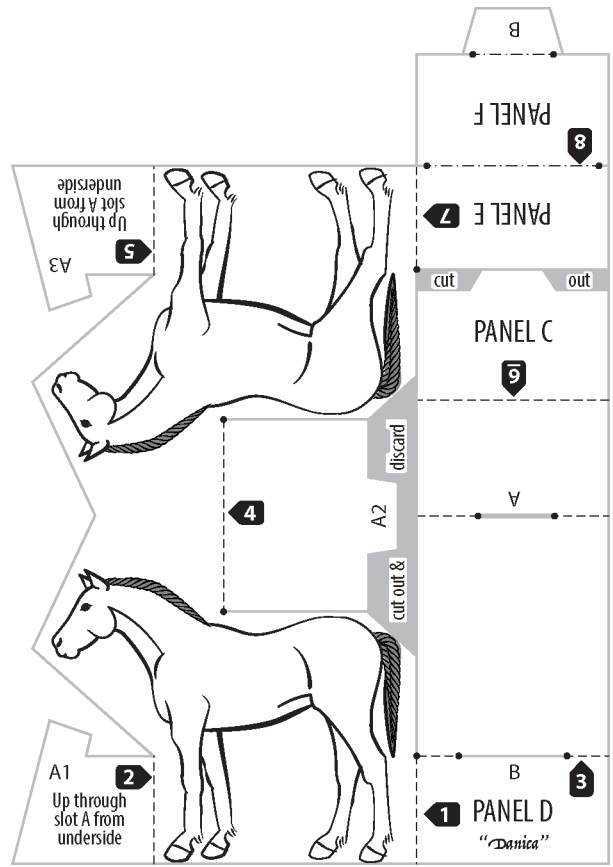


"JP"

Slot A receives 4 tabs.
Cut wider to accommodate.



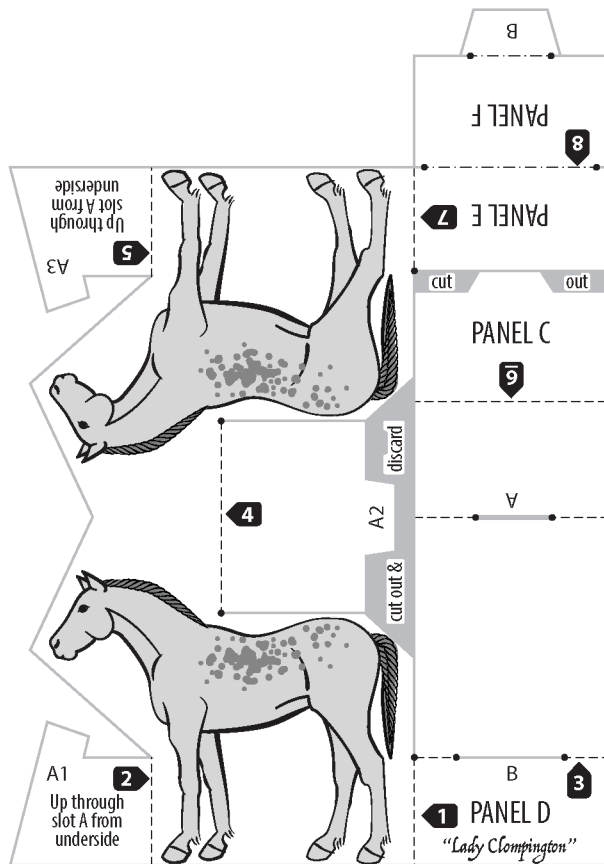
"Polk"



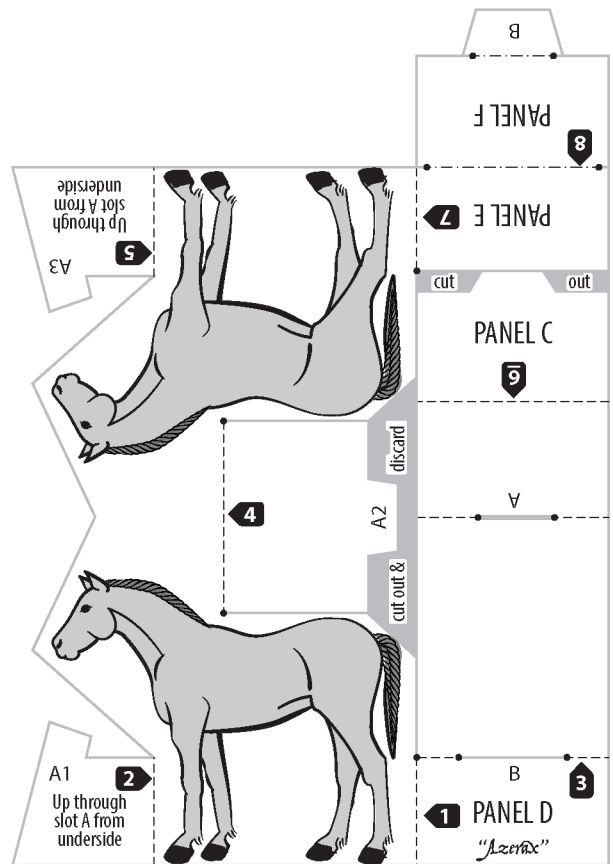
"Danica"

Slot A receives 4 tabs.
Cut wider to accommodate.

Slot A receives 4 tabs.
Cut wider to accommodate.



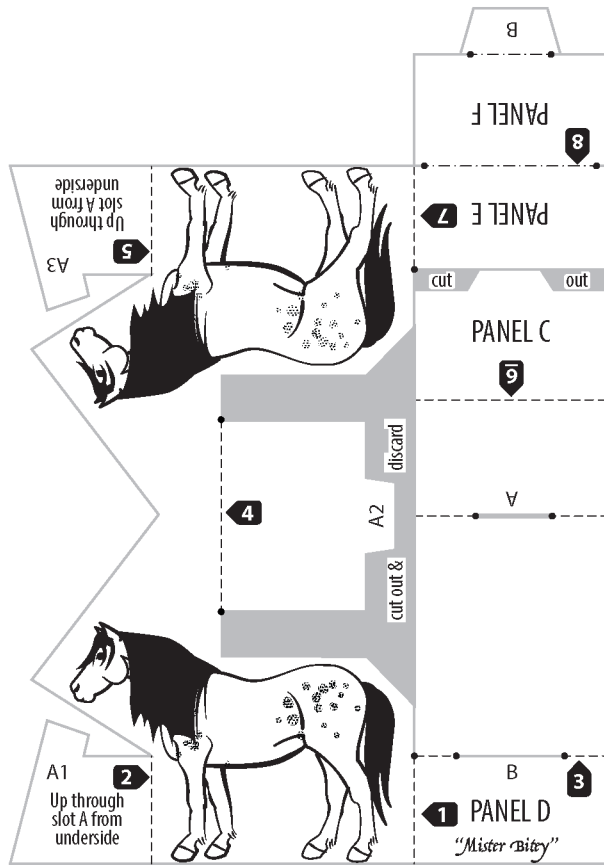
"Lady Clompington"



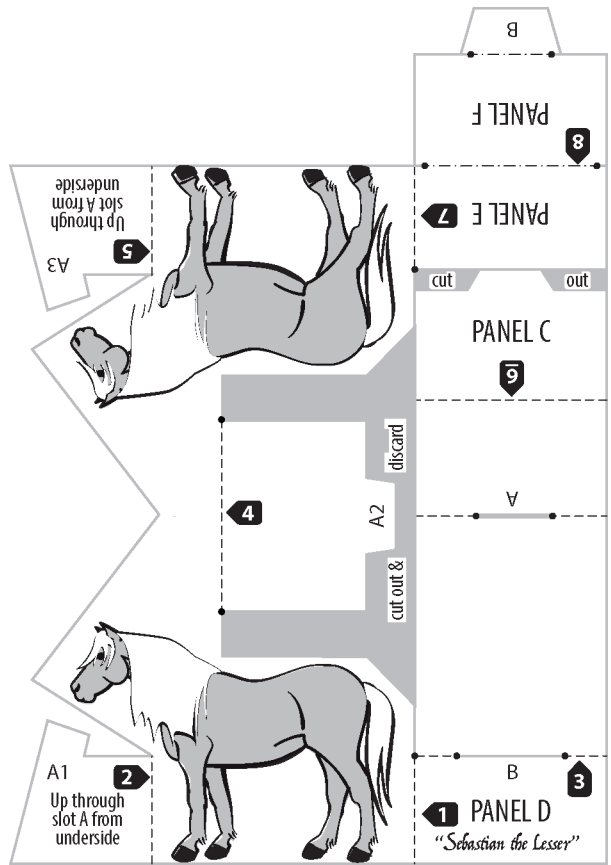
"Azerax"

Slot A receives 4 tabs.
Cut wider to accommodate.

Slot A receives 4 tabs.
Cut wider to accommodate.



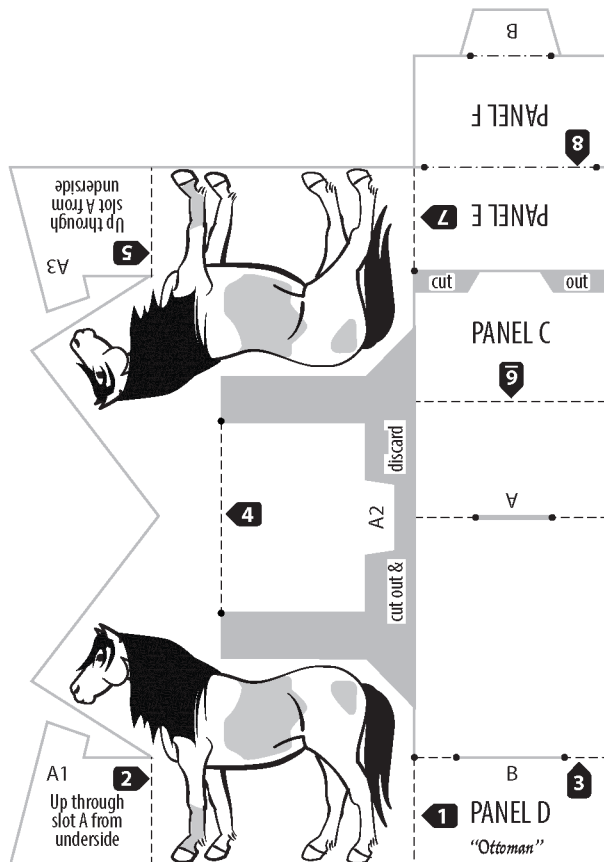
"Mister Bitey"



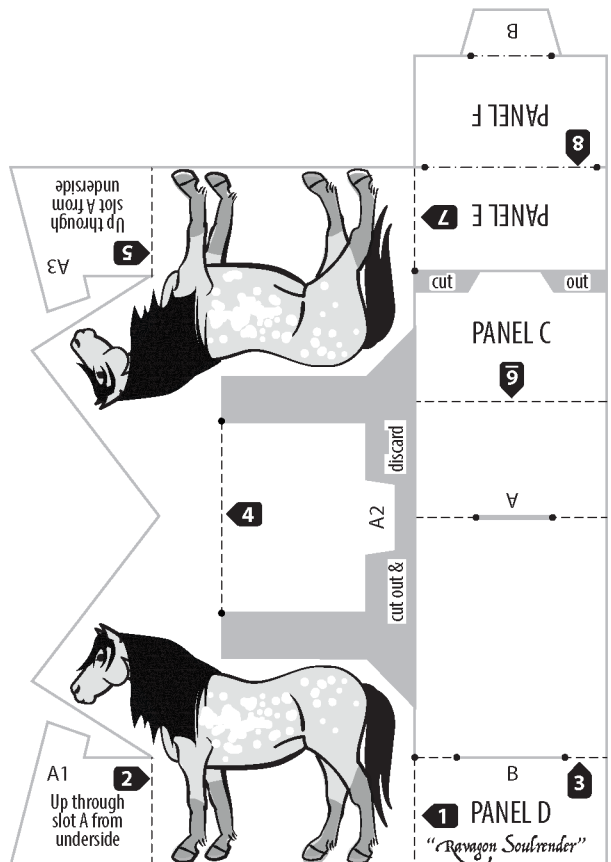
"Sebastian the Lesser"

Slot A receives 4 tabs.
Cut wider to accommodate.

Slot A receives 4 tabs.
Cut wider to accommodate.



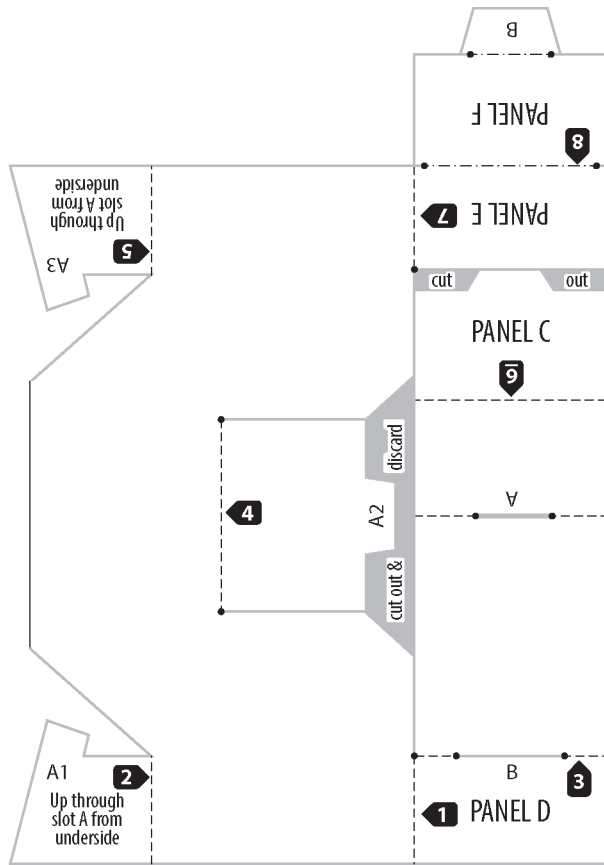
"Ottoman"



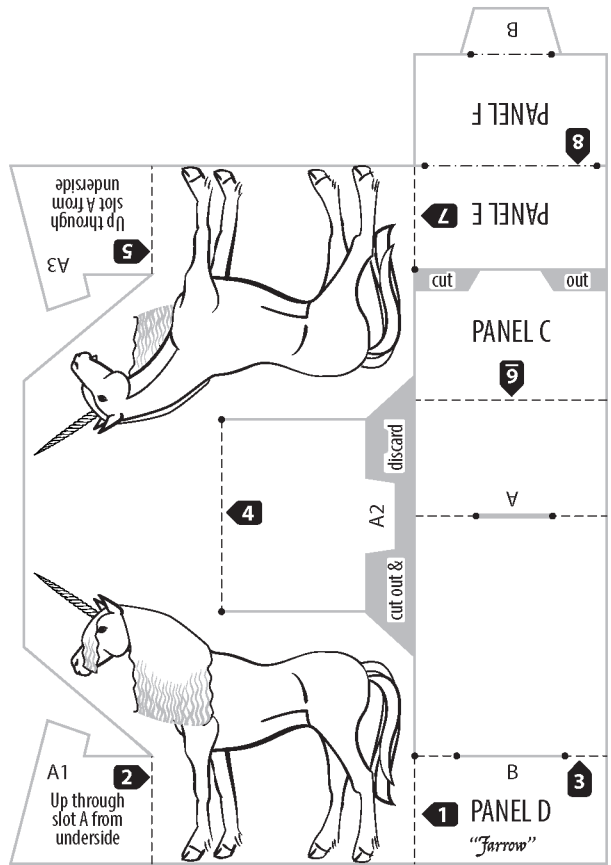
"Ravagon Soulrender"

Slot A receives 4 tabs.
Cut wider to accommodate.

Slot A receives 4 tabs.
Cut wider to accommodate.



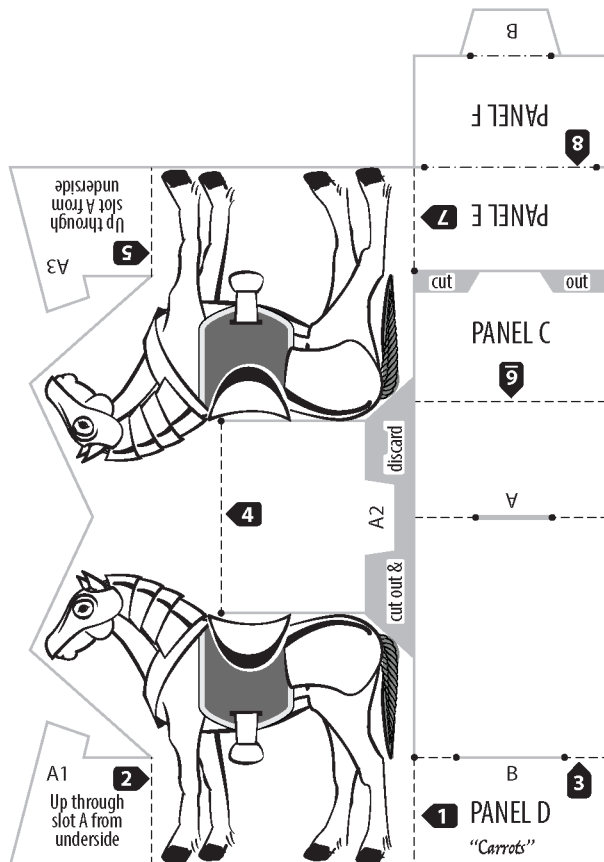
Ibestral/make your own



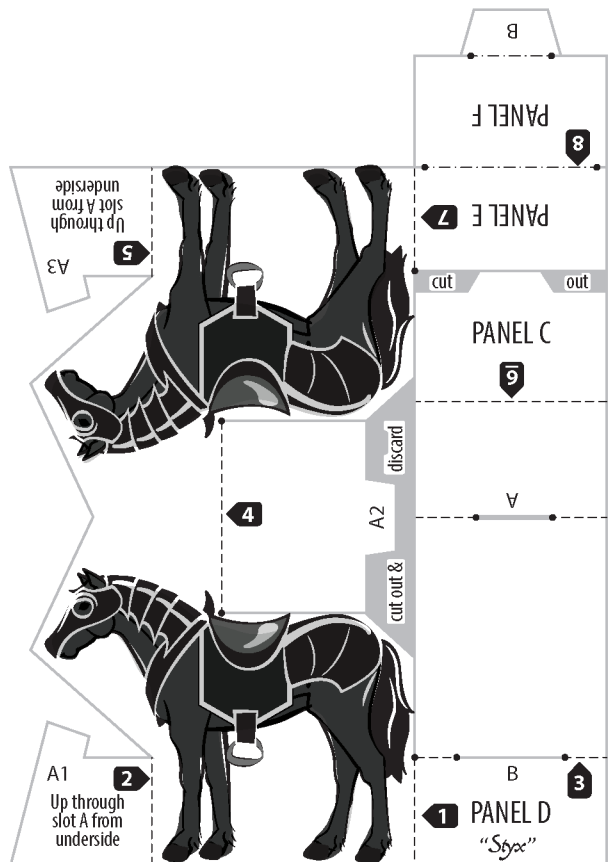
"Farrow"

Slot A receives 4 tabs.
Cut wider to accommodate.

Slot A receives 4 tabs.
Cut wider to accommodate.



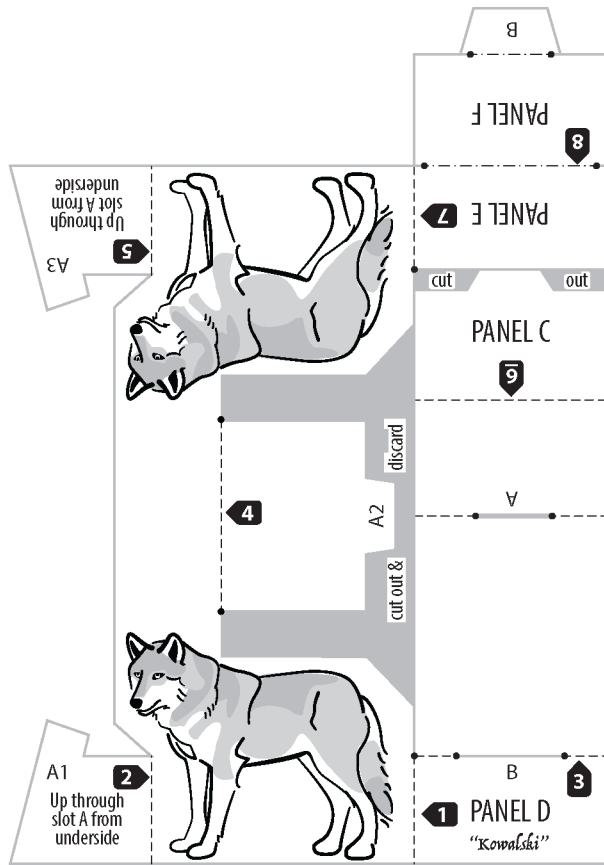
"Carrots"



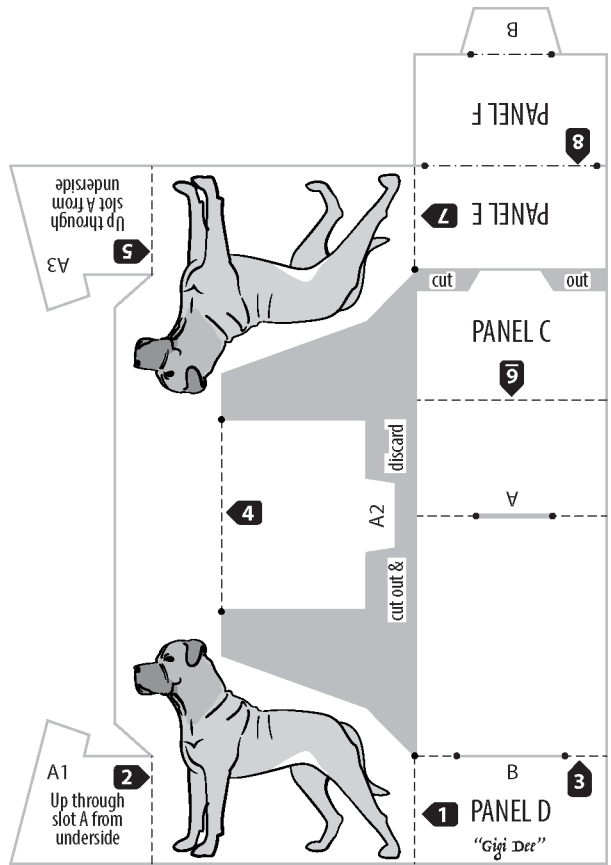
"Styx"

Slot A receives 4 tabs.
Cut wider to accommodate.

Slot A receives 4 tabs.
Cut wider to accommodate.



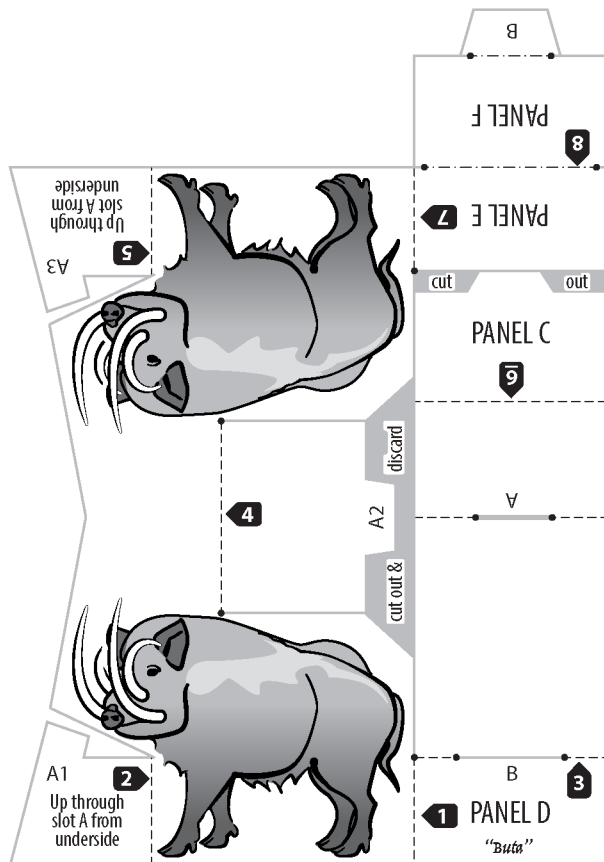
"Kowalski"



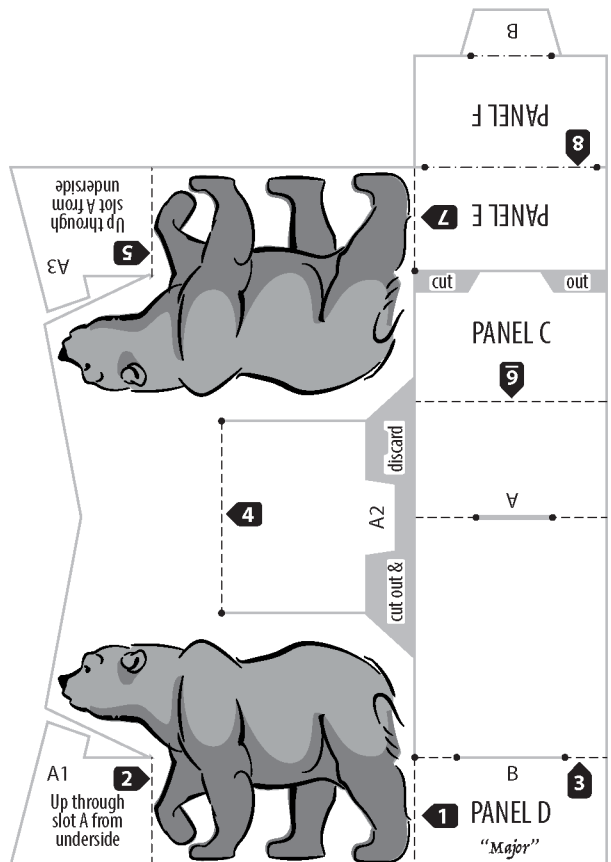
"Gigi Dee"

Slot A receives 4 tabs.
Cut wider to accommodate.

Slot A receives 4 tabs.
Cut wider to accommodate.



"Buta"



"Major"

Slot A receives 4 tabs.
Cut wider to accommodate.

Slot A receives 4 tabs.
Cut wider to accommodate.